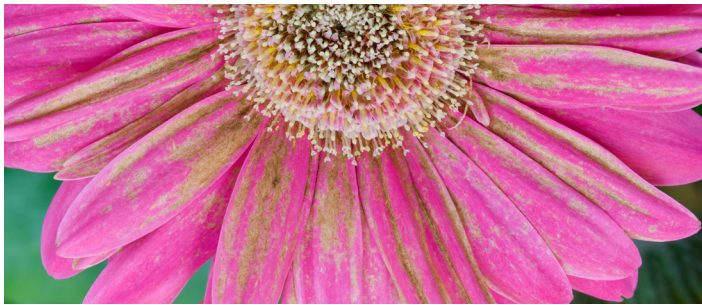


BioMontdorensis

Amblyseius montdorensis

BioMontdorensis (*Amblyseius montdorensis*) is a predatory mite from the Phytoseiidae family. It is compatible and complementary to parasitoids and other predators.

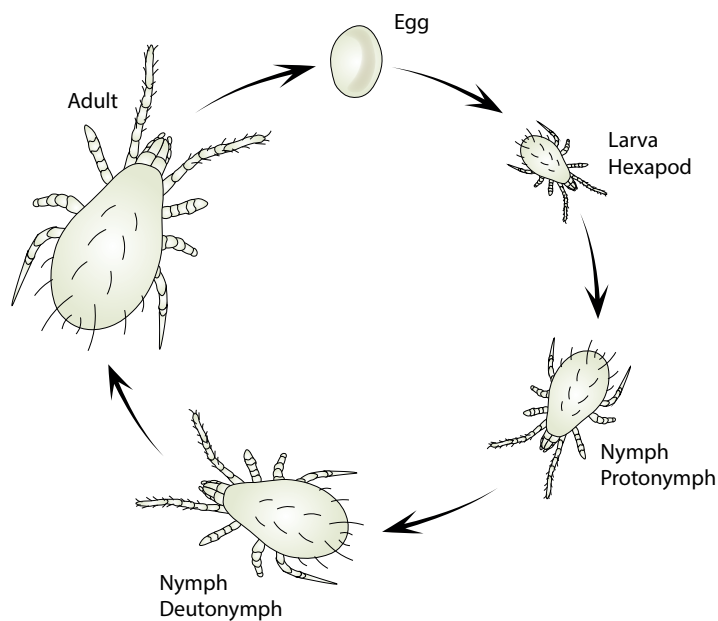


Thrips damage

DESCRIPTION

Adult *A. montdorensis* is a small, pale, pear-shaped predatory mite which, after feeding will take on the prey's coloration. The eggs and the larvae are clear and oval.

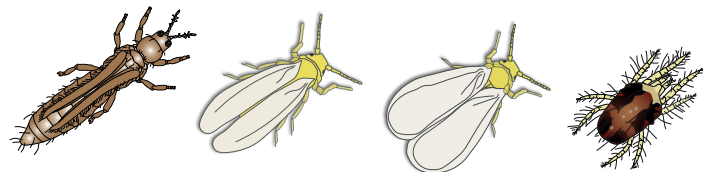
LIFE CYCLE



The adult females of BioMontdorensis lay their eggs on trichomes (leaf hairs). The eggs hatch after one to two days, under suitable conditions. All life stages are predatory and at a temperature of about 25°C, the cycle from egg to adult takes only 7 days which enables a rapid build-up of the population.

TARGET PESTS

Thrips, sweet-potato whitefly (*Bemisia tabaci*), greenhouse whitefly (*Trialeurodes vaporariorum*), spider mites (Tetranychidae), broad mites (*Polyphagotarsonemus latus*) and russet mites (Eriophyidae).



CROPS

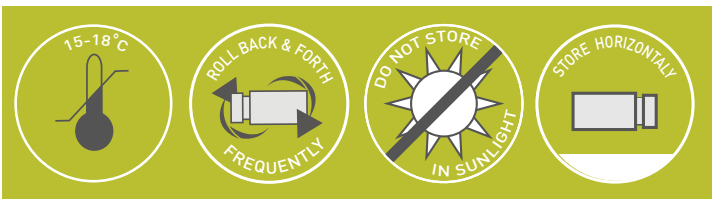
Cucumber, pepper, bean, tomato, strawberry, gerbera, rose and chrysanthemum among many others.

PRODUCT

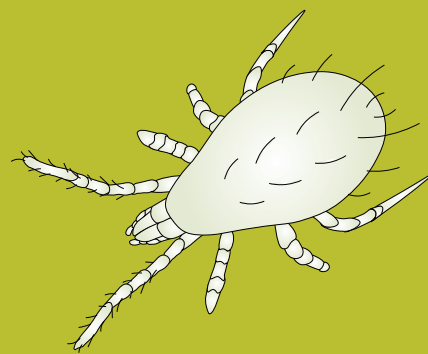
- BioMontdorensis is suitable for drone and blower applications.



- 1L Cylinder containing 50K mobile stages
- Box containing 500 sachets (250 ind/sachet)
- 5L Bag containing 250K mobile stages



BioMontdorensis



APPLICATION & HANDLING

- BioMontdorensis is shipped in aerated boxes. Packaging must be kept intact until placed in the greenhouse or field.
- Keep in a cool location until release.
- BioMontdorensis can be applied with a blower device such as Bugflow, by hand or by hanging the sachet in the foliage.

CYLINDER APPLICATION

- Gently rotate the cylinder to evenly mix the contents.
- The mites are released by gently tapping the open cylinder over the plants while walking between the rows of the crops.

SACHET APPLICATION

- Hung the sachet within the foliage, in shaded areas.



STORAGE

Do not expose the product to direct sunlight.

- Store the product horizontally at a temperature of 15-18°C / 59-64°F.
- Do not break the cold chain throughout the transport and storage process.
- You may store the product for up to 48 hours.

ADVANTAGES

- Suitable for mechanized applications (drones and blowers).
- Compatible with parasitoids and non-mite feeding predators.

DOSAGE

The amount and frequency of releases is determined by crop, the degree of infestation, weather conditions and damage thresholds on the crop. Additional quantities might be needed according to the infestation level and scouting information.

Consult with your BioBee representative.

MONITORING

Scouting and monitoring is crucial.



In some situations, biological pest control continues throughout the growing season, as successive generations of BioMontdorensis continue to control the pest.

GENERAL COMMENTS

Before combining BioMontdorensis with any chemical pesticide in the crop, please consult your BioBee technical advisory representative for compatibility guidelines.

DISCLAIMER

The success of biological pest control is affected by the crop's initial pest population (upon application of the product), weather conditions and chemical residue present in the crop, among other possible aggravating factors.